

9.2 Satkoshia Gorge Sanctuary

Name: Satkoshia Gorge Sanctuary

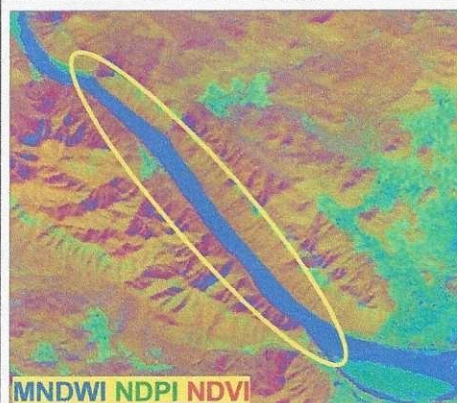
Location: 84°47'46" - 84°51'21"
20°30'12" - 20°35'22"

Wetland Type: River (Gorge) - Mahanadi

A stretch of 22 km of Mahanadi river in the Satkoshia Gorge between Tikerpara and Barmul has been declared as sanctuary in 1976 to protect and conserve the endangered Gharial (*Gavialis gangeticus*). The area of the sanctuary is estimated to be 79,552 ha. The river is very slow-flowing for much part of the year as evident from the satellite data of both post-monsoon as well as pre-monsoon. Several sand bars and gravel beds are exposed at low water levels, which form sites for the Gharial. The last wild hatchlings were observed in 1974. To restore the population, captive-reared individuals are being released to augment the vestigial population. About 107 were reported to have been released during 1977 to 1980. There has been a considerable amount of research centered around the Gharial project.



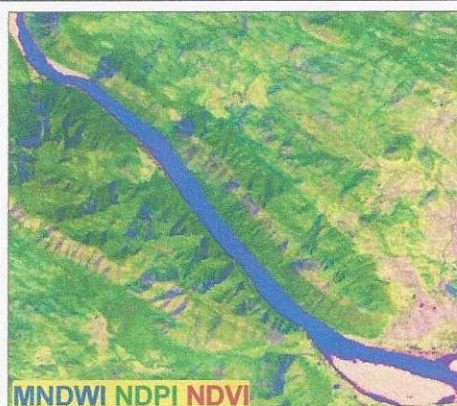
IRS P6 LISS-III FCC (18/12/2006)



FCC OF INDICES (18/12/2006)



IRS P6 LISS-III FCC (28/02/2007)



FCC OF INDICES (28/02/2007)

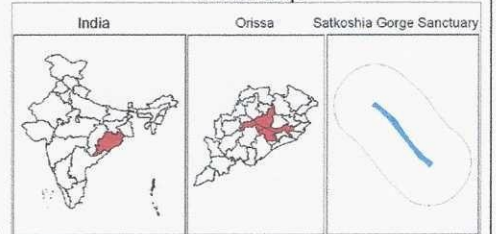


Symbol	Typecode	Level I	Level II	Level III
		Inland Wetlands		
			Natural	
■	1101			Lakes/Ponds
■	1102			Ox-bow lakes/ Cut-off meanders
■	1103			High altitude wetlands
■	1104			Riverine wetlands
■	1105			Waterlogged
■	1106			River/Stream
			Man-made	
■	1201			Reservoirs/Barrages
■	1202			Tanks/Ponds
■	1203			Waterlogged
■	1204			Salt pans
		Coastal Wetlands		
			Natural	
■	2101			Lagoons
■	2102			Creeks
■	2103			Sand/Beach
■	2104			Intertidal mud flats
■	2105			Salt marsh
■	2106			Mangroves
■	2107			Coral reefs
			Man-made	
■	2201			Salt pans
■	2202			Aquaculture ponds

Legend

- Wetlands (<2.25 ha)
- Settlements
- Canal
- Railway
- Drainage (line)
- Roads
- Town/Settlements
- District Boundary
- State Boundary
- International Boundary

Location Map



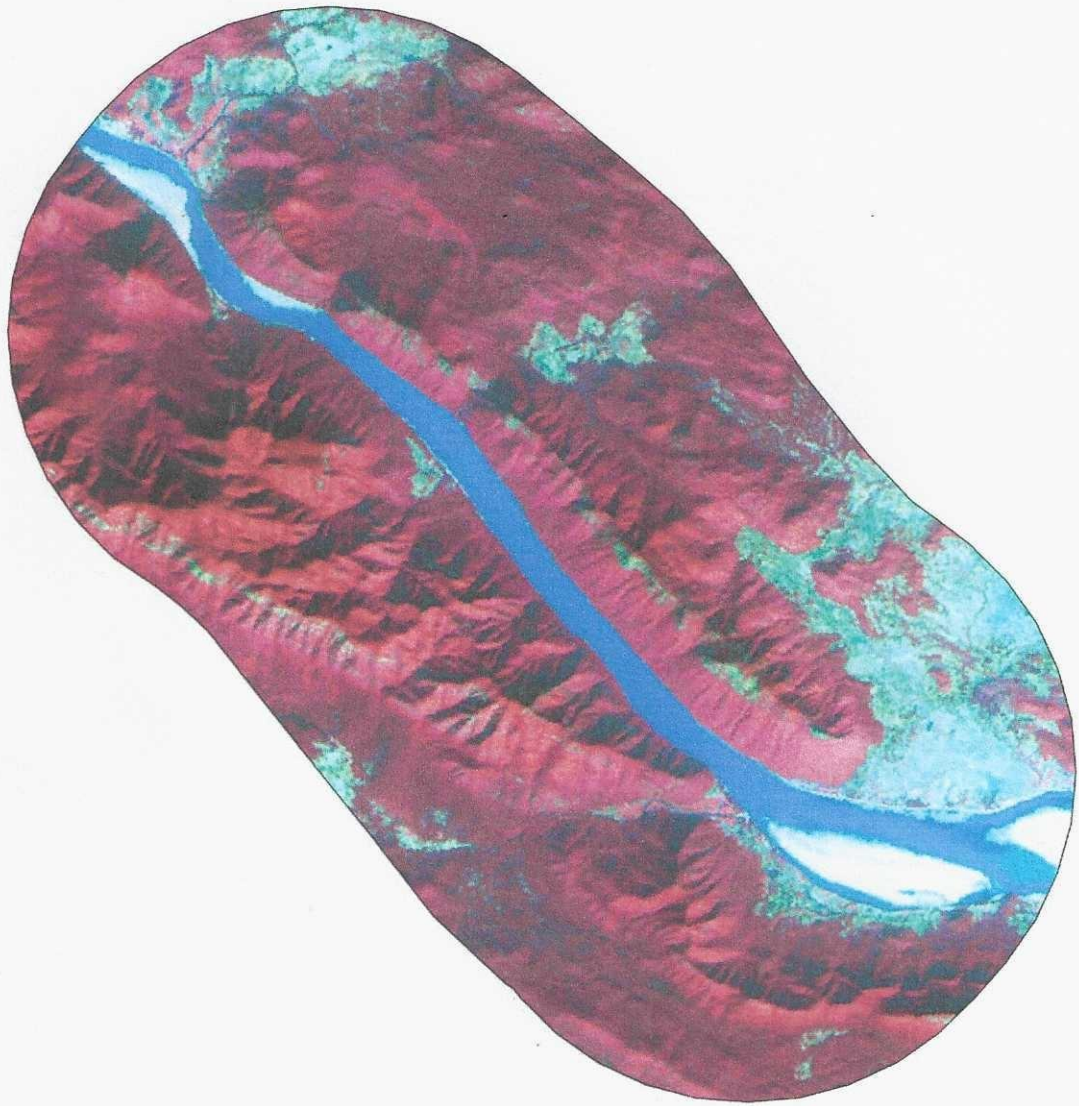
0 1 2 4 Kilometers

Data Source :
 IRS P6 LISS III data (Pre-monsoon and Post-monsoon Season 2006-07)
 Prepared By :
 Space Applications Centre (ISRO), Ahmedabad
 and
 Orissa Space Applications Centre, Bhubaneswar
 Sponsored By :
 Ministry of Environment and Forests
 Government of India

Plate 7: Wetland map - 5 km buffer area of Satkosha Gorge Sanctuary

State : Orissa

Satkoshia Gorge Sanctuary



IRS P6 LISS-III Post-monsoon data (2006)

Plate 8: IRS P6 LISS-III image - 5 km buffer area of Satkoshia Gorge Sanctuary